



DOLPHIN
RFID PVT LTD

Accelerating the IOT Revolution

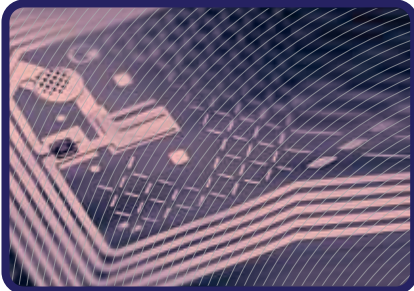


Dolphin Library Management System

RFID as a technology is being introduced in progressive libraries worldwide given that its applications leads to increased efficiency, productivity and enhanced user satisfaction. RFID is used to track, manage and secure books and other library assets as the system prevents theft, mis-filling of books/items and helps in searching missing/misplaced books.

What is RFID technology ?

Radio Frequency identification is an emerging technology which helps automate the existing manual/semi-automated processes. Dolphin RFID is a company which is fully dedicated to providing end-to-end RFID solutions and helping maintain them through the lifecycle. Dolphin RFID systems help integrate varied RFID readers from technology leaders and also integrates with the existing applications (including ERPs) thus making it simple for the end users to assimilate the technology.



Fully Automated RFID Solutions for Library Management System

With features like self issue/receive and verification with customizable rules, user authentication, reminders and alerts and user-friendly reports, DLMS is a unique tool with a plug and play installation and easy to use features which includes Book Management, search capability and audit capability apart from Anti-theft features.

Key Features

- ◆ UHF RFID tags help track the location of each book on the shelf, and books can be classified by genre, author, subject, or other characteristics.
- ◆ The middleware that runs the system can integrate with a library's existing management software.
- ◆ Customers can search for books and identify which shelf in the library the books are kept.
- ◆ Rapid Check-In/Check-Out (Issue/Receive).
- ◆ Self check-out and return is possible with special kiosks.
- ◆ Search of lost/misplaced books is possible in a very short time.
- ◆ Identification of wrongly placed books on shelves.
- ◆ Multiple audits ensure a well maintained library with easy accessibility of books.
- ◆ Anti-Theft system ensures non-issued books cannot be removed.

Areas of Utilization

- ◆ School and college libraries.
- ◆ Community libraries with multiple issue/receive options.
- ◆ Corporate/Government in-house libraries.

Options

Linking to internet for book search.

